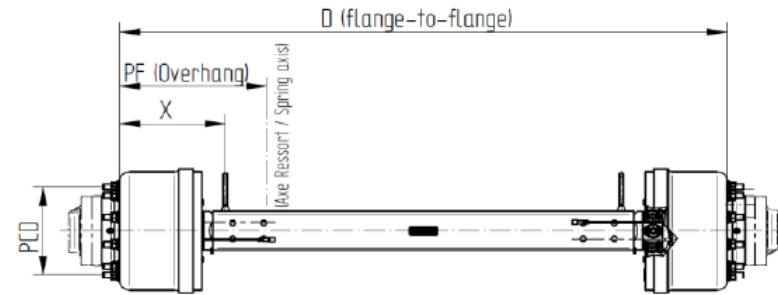


ESSIEU DROIT MOTORISE / RIGID POWERED AXLE

REF. 4387M21



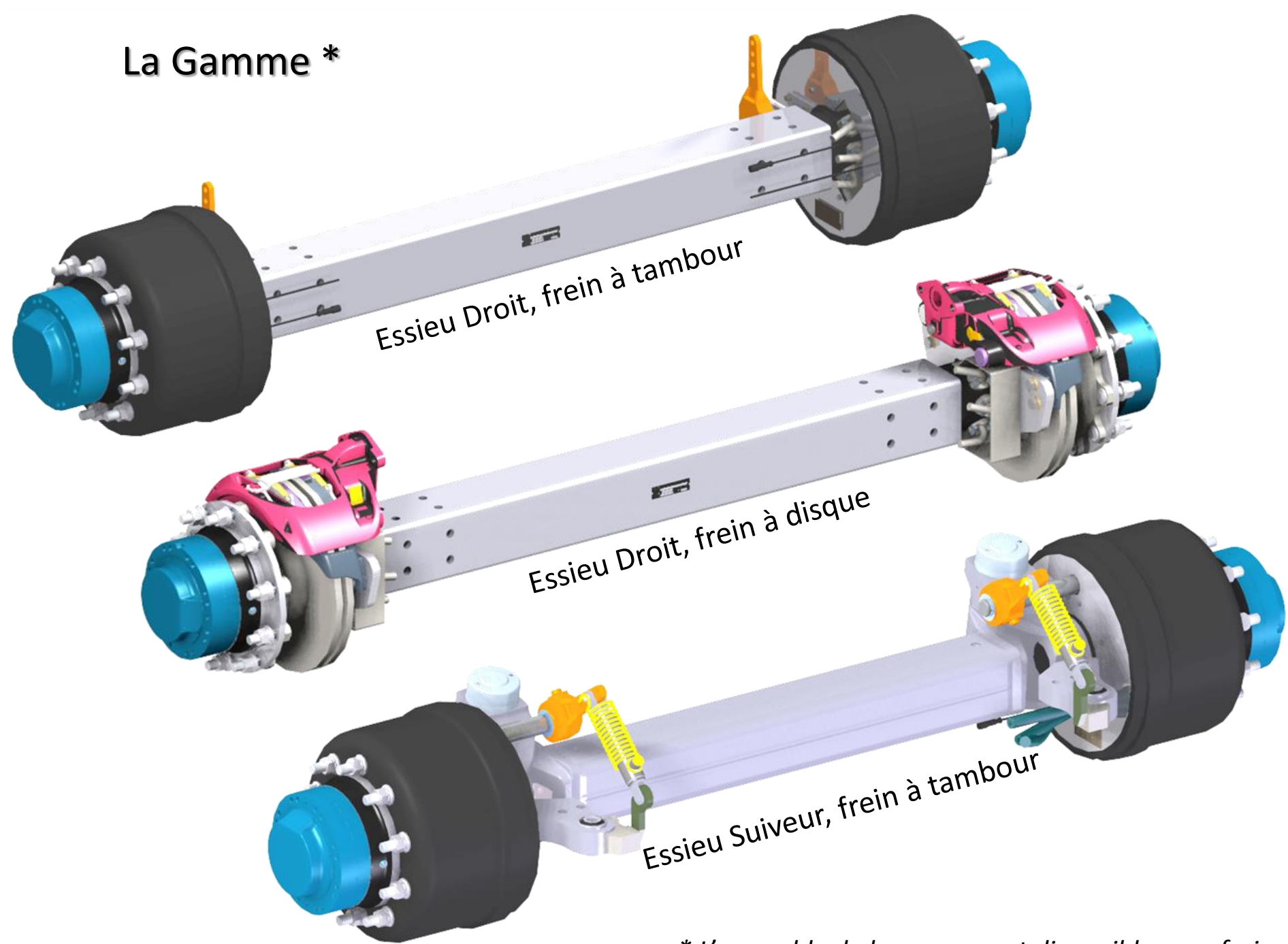
FEATURES

| | | |
|--|---|--|
| Charges admissibles / Allowed payloads | 11 000 DaN | 13 000 DaN |
| Vitesse maxi. / Max. speed | 105 km/h | 40 km/h |
| D = Voie moyeux Flange to flange | A la demande / On demand Standard : 2040 & 2150 mm | |
| PF = Porte-à-faux / overhang | Mini. | 380 mm (Axe ressort / spring axis) |
| | Max. | 615 mm (Axe ressort / spring axis) 520 mm (Axe ressort / spring axis) |
| X = Position levier de came Brake actuator position | Mini. | 375 mm |
| | Max. | 600 mm |
| Wheel rim | Size | 22.5" |
| | PCD | 10 axes M22x1.50 sur / on Ø335 mm |
| Raccord / hydrauliques Hydraulic connexion | Demi brides rectangulaires / Split flanges DB-6000-1/2"-M/U | |

HOMOLOGATION

| | Domaine d'application / Application field | Vitesse / Speed |
|-------------------|---|-----------------|
| CEMAGREF | France, agriculture et travaux publics <i>France, agricultural, public works trailers</i> | 25 km/h |
| TÜV | Allemagne, agriculture et travaux publics <i>Germany, agricultural and public works trailers</i> | 25 & 40 km/h |
| 71/320/CEE | Remorques routières <i>On-road trailers</i> | 105 km/h |

La Gamme *



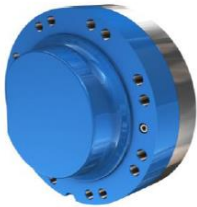
** L'ensemble de la gamme est disponible sans freins*

Les options

OPTIONS DISPONIBLES / AVAILABLE OPTIONS

Hydrobases

Hydrobase POCLAIN HYDRAULICS MFE08 1248 cm3



*Autre cylindrée, nous consulter
Other engine size, please contact us*

- ☞ *Les hydrobases sont livrées montées et testées sur l'essieu*
- ☞ *The hydrobases are delivered mounted and tested on the axle*

Accessoires de freinage / Braking accessories

Leviers manuels
Manual lever
Ref. 1620016



Leviers régleurs automatiques
automatic slack adjuster
Ref. 1409014 (paire / pair)



Vérin hydraulique Ø35
Hydraulic cylinder Ø35



ABS

Capteur ABS / ABS Sensor

